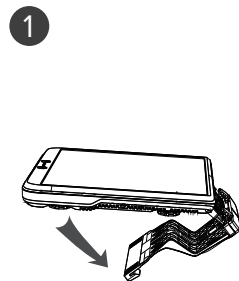
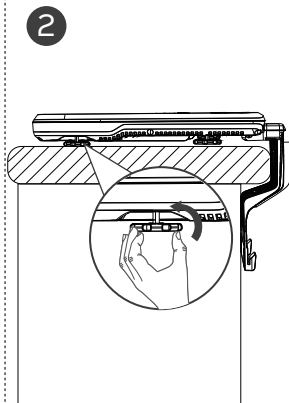


Step 1 - Install the solar kit

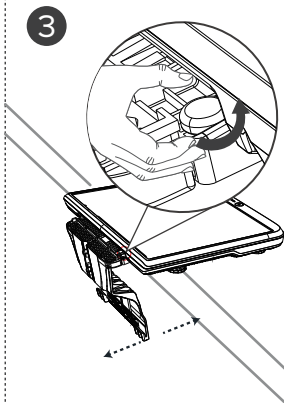
(Water depth shall be at 1.2m (4ft) at least and avoid any steps, sitting bar, and light under the installation area. The docking station shall be at least 1.0m (39.3 in) away from the corners.)



- Unfold the included solar kit, and put it onto a flat pool deck where the pool satisfy the requirements listed above.

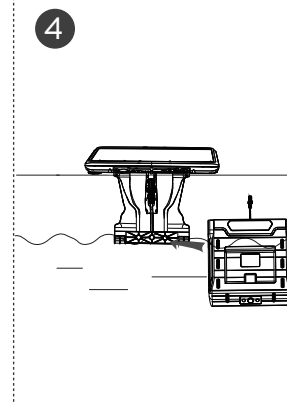


- Adjust the height of the level screws on the bottom of the solar kit, ensuring the solar panel on the deck is flat enough.

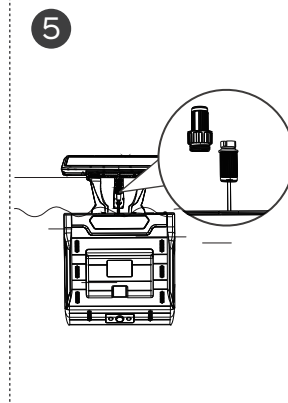


- Adjust the angle screw height to ensure the hook press against the wall tightly, and tighten it after fixing.

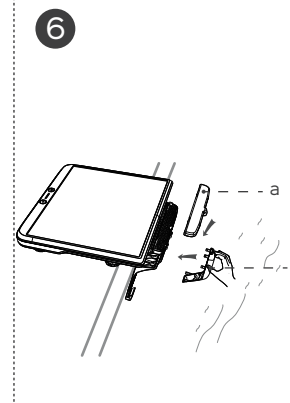
Step 2 - Hook up the docking station



- Hook up the docking station to the solar kit, keeping the whole set stable after installation.



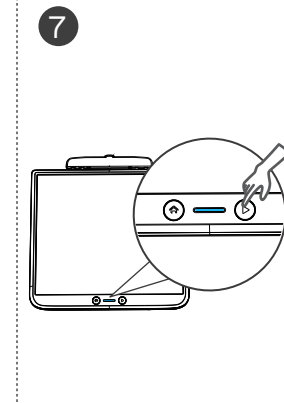
- Connect the cable from the solar kit to the one from the docking station, and insert the connector into the groove.



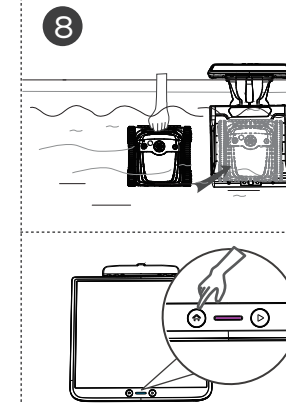
- Put the covers back to the solar kit. (The order is b then a.)

Step 3 - WYBOT App connection & setting

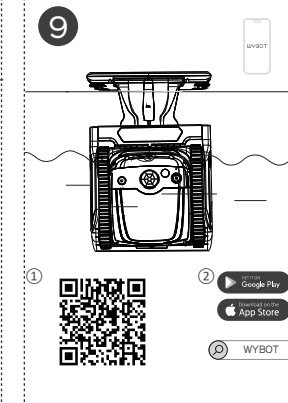
⚠ No charging devices above the ground using the docking station.



- Press the "P" button to turn on the solar kit.



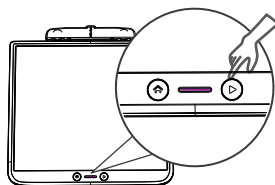
- Turn on the robot, and emerge the robot into the pool. Put it directly onto the docking station or press to call it back to start charging after shaking off inside air.



- Please download 'WYBOT', and bind your robot as per the APP direction.
- Customize your cleaning mode and cleaning schedule via the App.

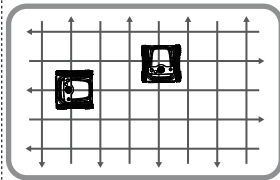
Step 4 - Start cleaning

10



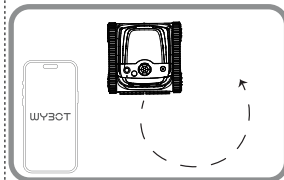
- Press the "▶" button or send order through the app to start the pool cleaning.

11



- The robot begins to clean walls, floor and waterline as default or your set through App.

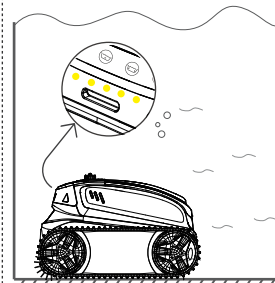
12



- You can control the cleaner remotely and complete the specific area cleaning via the App.

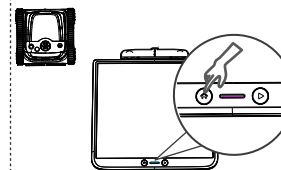
Step 5 - Removal from the pool

13



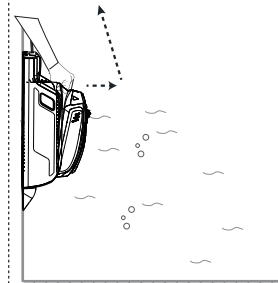
- The device will automatically move to the docking station when finishing cleaning or battery is low.

14



- You can also call the robot back to the docking station by pressing the home button or through the APP.

15

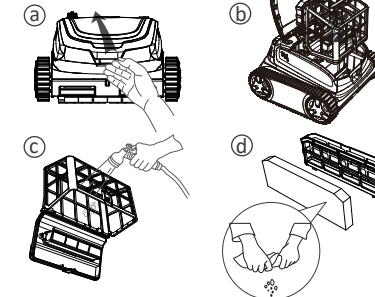


- Remove the robot from the docking station and power it off.

Step 6 - Clean and store

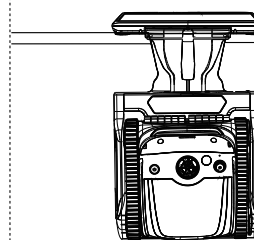
(For the safety of your solar panel, please keep its surface from any weight.)

16



- Cotton foam is an auxiliary filter to help trap the fine dirty particles. Recommend to use it for floor cleaning. Please do not install it when the pool water is heavy dusty, it may influence the operation of the cleaner.
- You should clean the filter after use. Insufficient cleaning may influence pool cleaning effect.

17



- Turn on the device and put it into the pool. Call it back to the docking station to keep it standby for next cleaning.
- Store the cleaner in a ventilated place and keep it out of direct sunlight or inclement weather during the off-season. Charge the device at least every 3 months.